



FOR THE QUALITY, WE CAN PROMISE!

Company Introduction

ZHEJIANG TOFINE INTERNATIONAL CO., LTD, is the biggest steel door export leader, and have around 10 years production and export experience. We have obtained various certifications such as CE, CQC, SONCAP (Nigeria), Q-MARK (HK) and ISO9001:2000 international quality certification.

TOFINE DOOR, our products have sold to more than 30 countries around the world. After years of development and always sum up the sales experience, we have specialized different series for different market requirement, such as construction project, retail, construction market etc. Recently our workshop already have 6 different structure production lines for specialized market customers. Whatever price & quality, you will find what you want from our all-round products.

Keeping products' innovation, pursuing excellent quality and absolutely controlling on production cost, is the key that TOFINE DOOR can go along with the door industry developing tendency, these running principle ensure TOFINE can keep competition to go faster than the others.

TOFINE DOOR, believes that GOOD REPUTATION, MUST BE EARNED, so all our management and worker always work hard here. We innovate for business: HOME THERE, TOFINE

CONTENT

STEEL ENTRY DOOR



03-26

LUXURY VILLA DOOR



27-32

FIRE PROOF DOOR



33-36

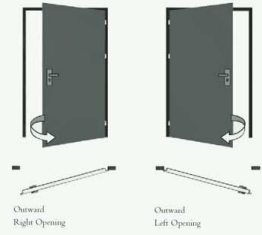
INTERIOR DOOR



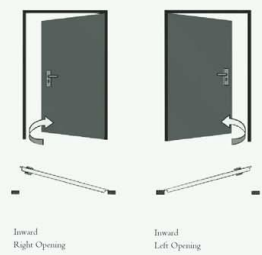
37-46

TECHNICAL INFORMATION

STAND OUTSIDE OF THE ROOM



STAND OUTSIDE OF THE ROOM



SECURITY STEEL ENTRY DOOR



TH-06

Door Leaf Thickness : 90mm
Steel Panel Thickness : 0.8-1.0mm
Steel Frame Thickness : 1.4-2.0mm
Size : 2050*860/900/960 or Customized
Color : Heat Transfer or Customized
Open Direction : Right/Left/Outside/Inside
Inside Filling : Honeycomb/Rock wool



TH-52

Door Leaf Thickness : 70mm
Steel Panel Thickness : 0.6-0.8mm
Steel Frame Thickness : 1.2-1.8mm
Size : 2050*860/900/960 or Customized
Color : Heat Transfer or Customized
Open Direction : Right/Left/Outside/Inside
Inside Filling : Honeycomb/Rock wool



FOR THE QUALITY, WE CAN PROMISE!



TH-53



TH-54



TH-55



TH-56



TH-30



TH-31



TH-35



TH-36



TH-22



TH-32



TH-37



TH-38



TH-39



TH-40



TH-42



TC-84



TH-23



TH-41



TH-108



TH-43



TH-45



TH-26



TH-46



TC-80



TH-47



TH-25



TH-24



TC-70A



TH-48



TH-49



TH-50



TH-51



TH-05



TC-27



TH-60



TH-61



TH-62



TH-67



TH-68



TH-63



TH-65



TH-66



TH-69



TH-70



TC-10



TC-69A



TC-07



TC-105



TC-113



TC-13



TC-90



TC-09



TC-102



TC-110



TC-01



TC-18



TC-02



TC-93



TC-69



TC-23



TC-12



TC-78



TC-22



TC-11



TC-25



TC-06



TC-30



TC-88



TC-70



TE-06



TC-83



TC-43



TC-89



TC-07A



TC-87



TE-11



TE-09



TE-10



TC-210



TC-201



TC-211



TC-212



TC-202



TC-204



TC-203



TC-215



TC-206



TC-213



TH-57

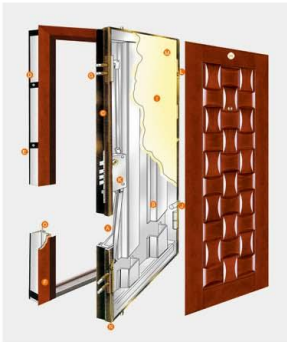
TH-58

TH-59



TH-71

TH-72



- A. Quality steel plate inside lining
- B. U type reinforced ribbons
- C. Door leaf edge lacing
- D. Strengthen anti-pry frame
- E. Strong plate(for installation of expanding bolt)
- F. Decorative wood line
- G. Side lock points
- H. HDF board veneered with natural wood skin
- I. Wide vision peephole
- J. Fixation pin
- K. Quality core-inserted security lock
- L. Strong hinge
- M. Sound-insulated warmth reseration:honey comd
- N. Thicken door leaf frame
- O. Sound-insulated rubber seal



TM-41



TM-03



TM-52



TM-02



TM-50



TM-09



TM-39



TM-01



TM-10



TM-14



TM-15



TM-55



TM-26



TM-49



TM-53



TM-16



TM-51



TM-52



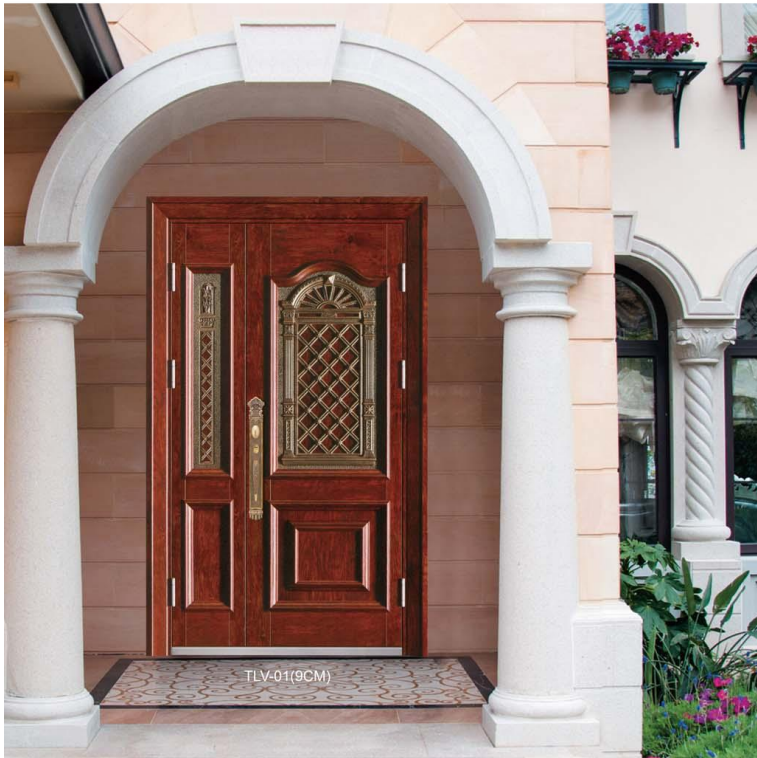
TM-23



TM-11



TM-29



TLV-01(9CM)



TLV-02(9CM)



TLV-03(9CM)



TLV-04(9CM)



TLV-05(9CM)



TLV-06(9CM)



TLV-07(9CM)



TLV-08(9CM)



TAC-01



TAC-02



TAC-03



TAC-05



TAC-06



TAC-07

ANTI FIRE GRADE / DOOR LEAF THICKNESS

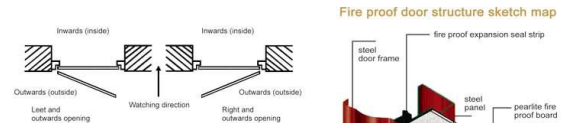
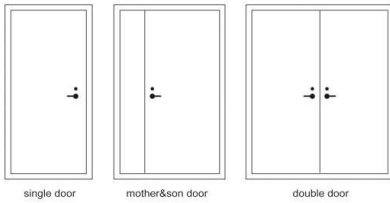
	First class	Second class	Third class
time of anti fire	≥1.5h	≥1.0h	≥0.5h
door frame steel panel thickness	1.5mm	1.2mm	1.2mm
door leaf steel panel thickness	0.8mm	0.8mm	0.8mm
door leaf thickness	≥70mm	≥70mm	≥70mm
high temperature proof board density	290kg/m ³ ±10%	260kg/m ³ ±10%	260kg/m ³ ±10%

Single door with peephole, mother&son door with peephole, door leaf thickness >70mm, height<2800mm, single fire proof door width<1000, double fire proof door width>1300mm
 1.Main material: door frame, door leaf skeleton and door leaf panel are made of good quality steel panels, the fillings inside is the pearlite which can bear the high temperature of 1200 degrees
 2.Fire proof hardware parts: fire proof peephole, fire proof lock set, closer
 3.Using range: all kinds of high buildings, hotels, restaurants, hospitals, factories and so on, also conform to GB5824-86, individually design and make them according to different sizes of door hole.

STORAGE AND TRANSPORTATION

During the transportation, loading and unloading of fire proof doors, must handle with care, storing vertically without any extrusion. Also need to be rain proof and humidity proof.

FIRE PROOF DOOR STRUCTURE SKETCH MAP

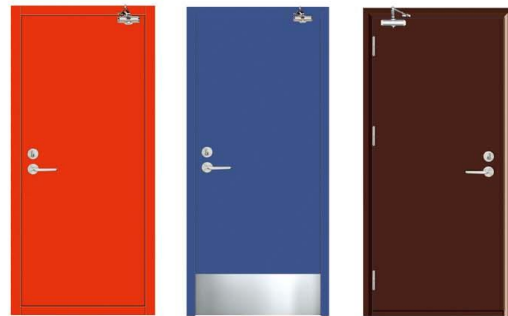


Installation points for attention

1. During the installation of fire proof doors, just fix door frame onto the wall tightly and vertically
2. Installing the needed hardware sets of fire proof doors, during the use, assure closing flexibility and seal.

OPENING DIRECTION

1. Fire proof door should be closed often with opening outwards and opening towards the direction of dispersion
2. Installation equipments for doors, regarding the door hole, please offer us the building planar graph and size list





IP-83



IP-22



IP-80



IP-81



IP-82



IP-10



IP-85



IP-86



IP-87



IP-23



IP-57



IP-88



IP-89



IP-27



IP-24



IP-25



IP-09



IP-26



IP-90



IP-91



IP-92



IP-100



IP-101



IP-102



IP-93



IP-95



IP-58



IP-59



IP-103



IP-72



IP-105



IP-106



IP-96



IP-97



IP-98



IP-99



IP-68



IP-67



IP-75



IP-77



PAGE41



PANEL STRUCTURE FRAME A FRAME B FRAME C

OPTIONAL SERIES POPULAR COLOR



White oak Manchurian ash White manchurian ash Gold fir Cherry
 Egyptian Yellow Walnut Wenge New yellow rosewood New red walnut
 New Royal Red Iron and cherry wood Thai teak White oak Pure white



PAGE42



TAB-01 TAB-02



TAB-03 TAB-05 TAB-06

PAGE43



TAB-07 TAB-08 TAB-09 TAB-10



TAB-11 TAB-12 TAB-13 TAB-15

PAGE44



TAB-16 TAB-17 TAB-18 TAB-19 TAB-20



TAB-21 TAB-22 TAB-23 TAB-25 TAB-26



TAB-27 TAB-28 TAB-29 TAB-30 TAB-31



TAB-32 TAB-33 TAB-35 TAB-36 TAB-37



TAB-38 TAB-39 TAB-40 TAB-41 TAB-42

■ Handle



H-52 H-53 H-54 H-55 H-56 H-57